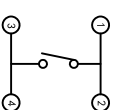
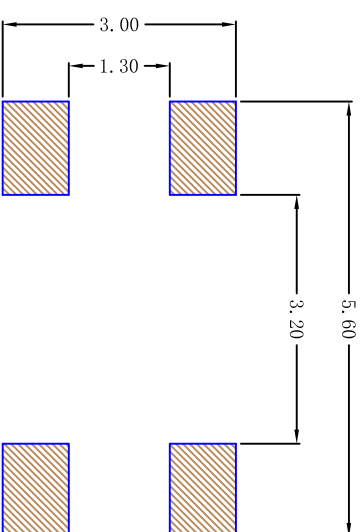
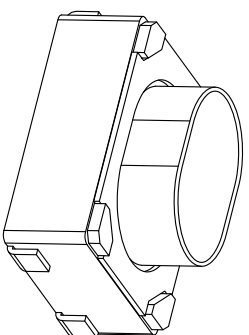
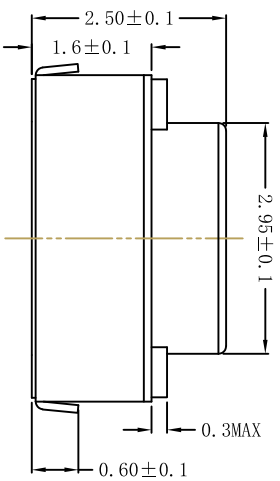
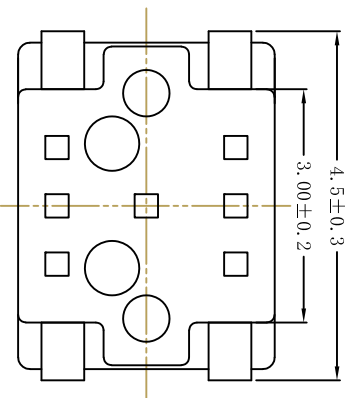
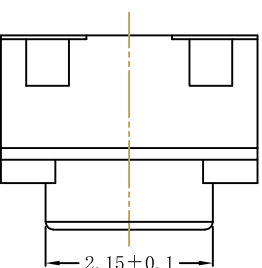
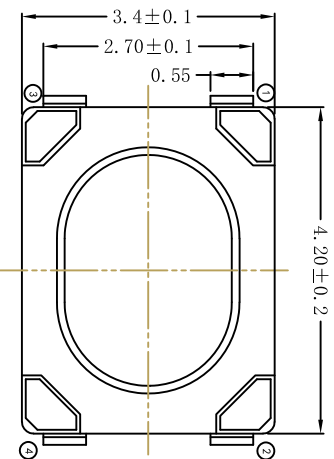


P. C. B MOUNTING PATTERN DIMENSION
the following soldering are recommended
for reflow soldering



CIRCUIT DIAGRAM



技术参数

NO	项目	参数
1	额定电流	50mA 12V DC
2	接触电阻	≤100mΩ
3	按压力	400±50gf
4	行程	0.2±0.1mm
5	绝缘电阻	>100MΩ
6	抗电强度	250V 50Hz 1Min
7	寿命	100, 000 cyc

5	Push-button	Rubber	Blue	-----
4	Cover	Brass	-----	AgNi Plated
3	Reed	SUS	-----	Silver Plated
2	Terminal	Bronze	-----	AgNi Plated
1	Housing	LCP	White	-----
NO.	DESCRIPTION	MATERIAL	COLOR	REMARK

未注公差

30<L	±0.30
10<L≤30	±0.20
5<L≤10	±0.15
L≤5	±0.10

设计	审核	批准	设计	审核	批准
			20121110		
			单位	比例	
			mm	5:1	
			产品名称	轻触开关	
			TACT SWITCH		
			产品型号	3.2*4.2 硅胶按钮	

借(通)用件登记					
描 图					
描 校					
旧底图总号					
底图总号					
签 字					
日 期					
更改文件号					
标 记					
日 期					
变更内容					
负责					
审核					
批准					
角 度					
±2°					